

Hitachi Data Ingestor

6.4.2

KVM Installation Guide

This document provides information about installing and configuring the Hitachi Data Ingestor software (HDI) on KVM.

© 2017 Hitachi Vantara Corporation. All rights reserved.

No part of this publication may be reproduced or transmitted in any form or by any means, electronic or mechanical, including photocopying and recording, or stored in a database or retrieval system for commercial purposes without the express written permission of Hitachi, Ltd., or Hitachi Vantara Corporation (collectively, "Hitachi"). Licensee may make copies of the Materials provided that any such copy is: (i) created as an essential step in utilization of the Software as licensed and is used in no other manner; or (ii) used for archival purposes. Licensee may not make any other copies of the Materials. "Materials" means text, data, photographs, graphics, audio, video and documents.

Hitachi reserves the right to make changes to this Material at any time without notice and assumes no responsibility for its use. The Materials contain the most current information available at the time of publication.

Some of the features described in the Materials might not be currently available. Refer to the most recent product announcement for information about feature and product availability, or contact Hitachi Vantara Corporation at https://support.HitachiVantara.com/en_us/contact-us.html.

Notice: Hitachi products and services can be ordered only under the terms and conditions of the applicable Hitachi agreements. The use of Hitachi products is governed by the terms of your agreements with Hitachi Vantara Corporation.

By using this software, you agree that you are responsible for:

- 1) Acquiring the relevant consents as may be required under local privacy laws or otherwise from authorized employees and other individuals to access relevant data; and
- 2) Verifying that data continues to be held, retrieved, deleted, or otherwise processed in accordance with relevant laws.

Notice on Export Controls. The technical data and technology inherent in this Document may be subject to U.S. export control laws, including the U.S. Export Administration Act and its associated regulations, and may be subject to export or import regulations in other countries. Reader agrees to comply strictly with all such regulations and acknowledges that Reader has the responsibility to obtain licenses to export, re-export, or import the Document and any Compliant Products.

EXPORT CONTROLS - Licensee will comply fully with all applicable export laws and regulations of the United States and other countries and Licensee shall not export, or allow the export or re-export of, the Software, API, or Materials in violation of any such laws or regulations. By downloading or using the Software, API, or Materials, Licensee agrees to the foregoing and represents and warrants that Licensee is not located in, under the control of, or a national or resident of any embargoed or restricted country.

Hitachi is a registered trademark of Hitachi, Ltd., in the United States and other countries.

AIX, AS/400e, DB2, Domino, DS6000, DS8000, Enterprise Storage Server, eServer, FICON, FlashCopy, IBM, Lotus, MVS, OS/390, PowerPC, RS6000, S/390, System z9, System z10, Tivoli, z/OS, z9, z10, z13, z/VM, and z/VSE are registered trademarks or trademarks of International Business Machines Corporation.

Active Directory, ActiveX, Bing, Excel, Hyper-V, Internet Explorer, the Internet Explorer logo, Microsoft, the Microsoft Corporate Logo, MS-DOS, Outlook, PowerPoint, SharePoint, Silverlight, SmartScreen, SQL Server, Visual Basic, Visual C++, Visual Studio, Windows, the Windows logo, Windows Azure, Windows PowerShell, Windows Server, the Windows start button, and Windows Vista are registered trademarks or trademarks of Microsoft Corporation. Microsoft product screen shots are reprinted with permission from Microsoft Corporation.

All other trademarks, service marks, and company names in this document or web site are properties of their respective owners.

Contents

- Preface 4
- Overview 6
- Installation procedure..... 9
- Update installation of HDI..... 28
- Creating a template of VMA and cloning 30
- Live migration..... 34
- Restoring VMA..... 34
- Appendix..... 39

Preface

About this document

This document provides information about installing and configuring the Hitachi Data Ingestor software (HDI) on KVM. Throughout this document, instances of HDI installed on KVM are referred to as VMA. This guide is intended to provide the information about applicable virtual machine environment as well as instructions for setting up HDI on KVM.

Intended audience

Readers should have basic knowledge of:

- KVM and virtual machine operation with virt-manager
- Hitachi Data Ingestor for Single Node

Product version

This document is applicable to the Hitachi Data Ingestor 6.4.2 or later.

Revision History

Revision	Date	Description
1	Mar. 19, 2018	Newly Created

Related documentation

This guide is based on the following documents:

- Hitachi Data Ingestor Installation and Configuration Guide
- Hitachi Data Ingestor Single Node Administrator's Guide
- Hitachi Data Ingestor Single Node Getting Started Guide

Getting help

Hitachi Vantara Support Connect is the destination for technical support of products and solutions sold by Hitachi Vantara. To contact technical support, log on to Hitachi Vantara Support Connect for contact information: <https://support.hitachivantara.com/en-us/contact-us.html>.

Hitachi Vantara Community is a global online community for customers, partners, independent software vendors, employees, and prospects. It is the destination to get answers, discover insights, and make connections. Join the conversation today! Go to community.hitachivantara.com, register, and complete your profile.

Accessing product downloads

Product software, drivers, and firmware downloads are available on Hitachi Vantara Support Connect: <https://support.hitachivantara.com/>.

Log in and select Product Downloads to access the most current downloads, including important updates that may have been made after the release of the product.

Overview

KVM is a virtual platform environment that runs on Linux. VMA is executed as a guest OS on KVM. VMA and HDI in a single-node configuration both provide the same functionality.

Overview of system configuration

VMA and HDI in a single-node model have different hardware requirements. Instead of physical hardware, VMA requires a Linux host on which KVM is installed. Figure 0-1 shows the system configuration of VMA.

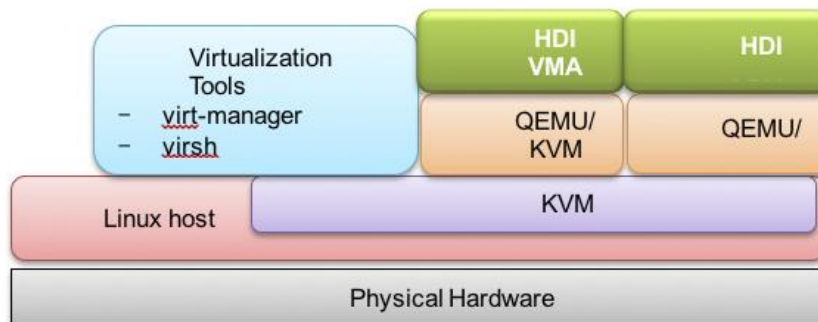


Figure 0-1 System configuration components

Host machine configuration

A host must satisfy the following hardware requirements. Table 0-1 shows the system requirements for the host machine.

Table 0-1 System requirements for the host machine

Item	Configuration
Processor	x64-based processor (Intel 64, AMD64) Intel-VT or AMD-V is enabled, and data execution prevention (DEP) is enabled
Host OS	<ul style="list-style-type: none">SUSE Linux Enterprise Server 12 SP3Red Hat Enterprise Linux 7.4
Memory for the host OS	12 GB or more

	* Number of guest OSs to be executed simultaneously x 8 GB + 4 GB or more
Storage for the host OS	Amount of storage used by the host+64 GB or more * 64 GB is the minimum requirement for a single guest OS.
Network adapters	2

Virtual machine configuration

Error! Reference source not found. shows the virtual machine configuration.

Item	Configuration	Notes
Number of processors	2 or more	Select Hypervisor default or qemu64 as model.
Memory	8192 MB or more	
IDE controllers	1	
Number of virtual disks		
OS LU	1	Create this item as VirtIO Disk1(mandatory).
Shared LU	1	Create this item as VirtIO Disk2(mandatory).
User LUs	1 to 21(*2)	Create this item as VirtIO Disk3 ~ 23. At least 1 user LU is required.
Virtual disk capacity (*1)		
OS LU	26 GB or more	
Shared LU	36 GB or more	
User LUs	2 GB to 128 TB	
Disk type		

OS LU Shared LU	Raw	Other disk types, such as qcow2, are not supported.
User LUs	Raw or qcow2	Other disk types are not supported.
Network Adapters	2	Select virtio or e1000. Other devices are not supported.
CD/DVD Drives	1	Create this item IDE controller. Map the ISO image.
<p>Note2:</p> <p>*1: Virtual disk capacity cannot be extended after installation. Estimate the required capacity of user LUs before installation.</p> <p>*2: PCI bridges are not supported. Note that if you attempt to add a virtual disk to the last free slot of a PCI while VMA has stopped (the typical case would be when you attempt to add the 21st user LU), virt-manager automatically adds a PCI bridge to that slot. We recommend that you add an LU while VMA is running.</p>		

HDI VMA characteristics

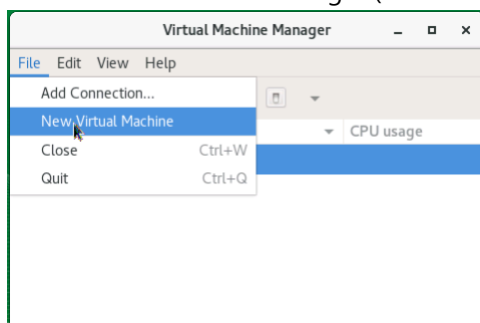
HDI VMA has the following characteristics in comparison with an HDI single node model:

- Tagged VLAN, link aggregation, line redundancy cannot be set in VMA. These functions can be set in the host.
- Software performance varies depending on the load on the Linux host.
- Negotiation mode cannot be changed when "virtio" is chosen as the NIC type of VMA.
- The speed of "Ethernet Interface" in the Network tab of VMA is always displayed as "--".
- The link speed of "Network Interface" displayed when the hwstatus command of VMA is executed is always displayed as "--".
- Media type, Negotiation mode, Speed, and Duplex in the List of Data Ports window of VMA are always displayed as "--".
- Less hardware disruption or failure monitoring capability than HDI single node.

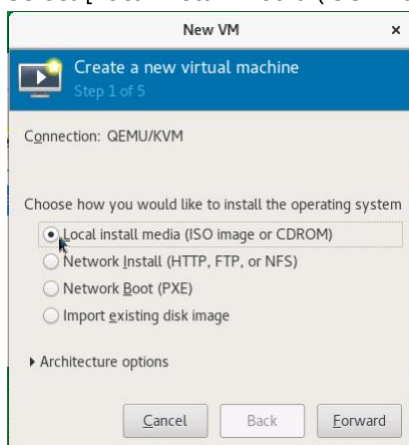
Installation procedure

This section describes the procedure for creating an HDI VMA on KVM.

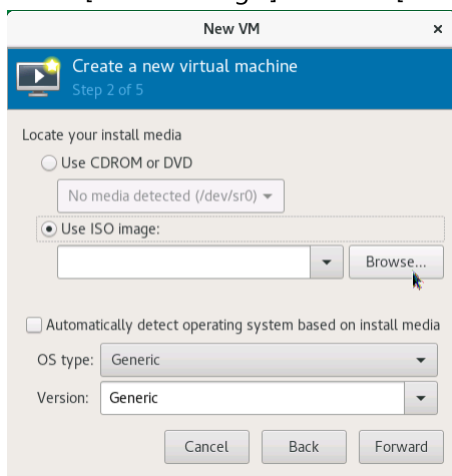
- 1) Start Virtual Machine Manager (virt-manager) and select [New Virtual Machine].



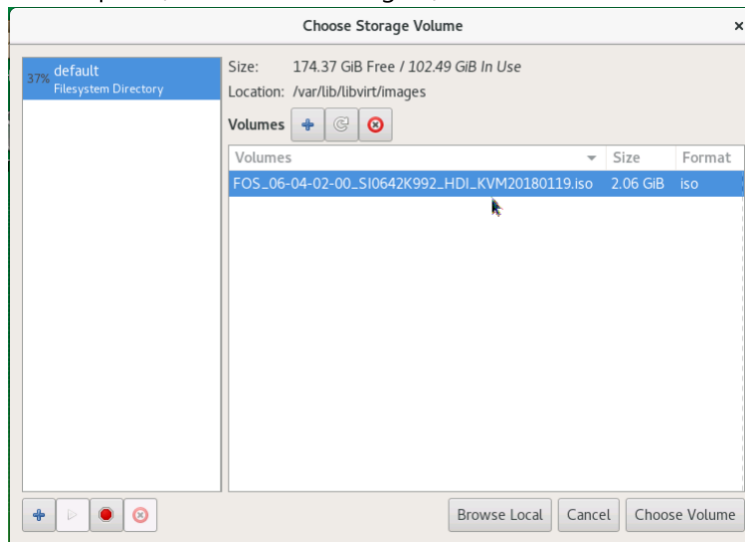
- 2) Select [Local install media (ISO image or CDROM)] and then click [Forward].



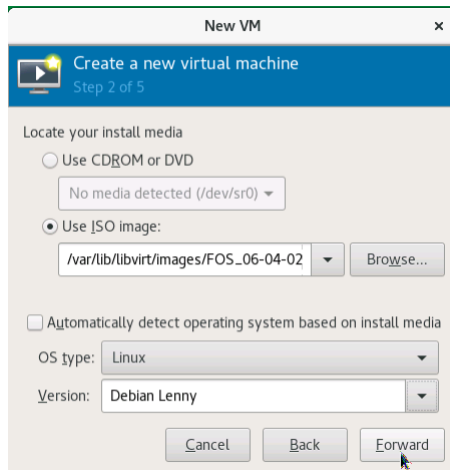
- 3) Select [Use ISO image:] and click [Browse...].



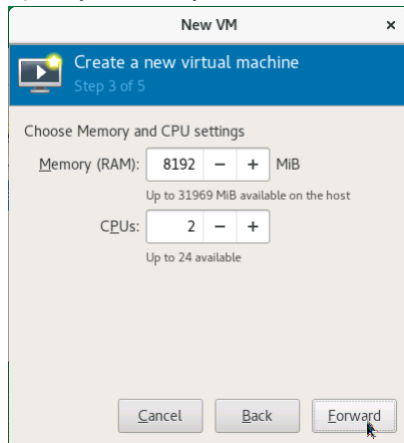
- 4) Select ISO image and click [Choose Volume]. In this case, the ISO image is stored in default pool (/var/lib/libvirt/images/).



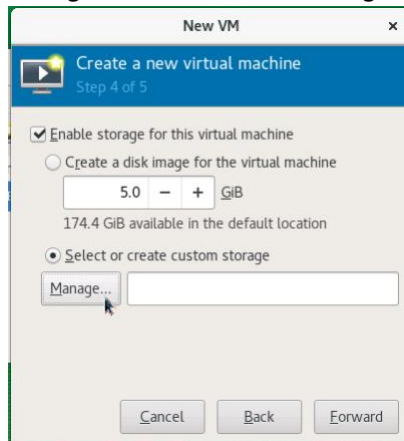
- 5) Select "Linux" as [OS type] and select "Debian Lenny" as [Version], and then click [Forward].



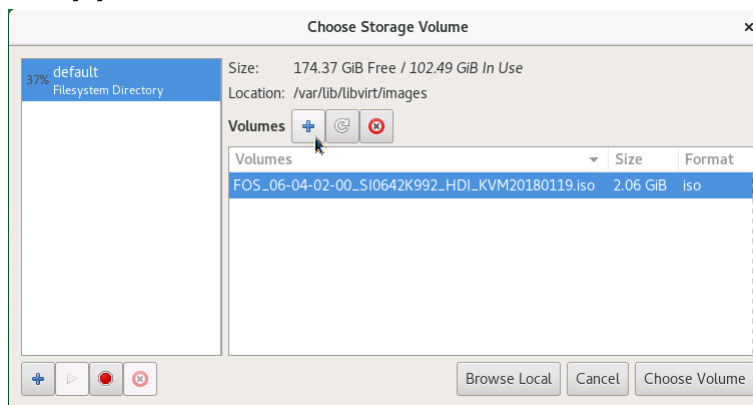
- 6) Specify [Memory (RAM)] and [CPUs], and then click [Forward].



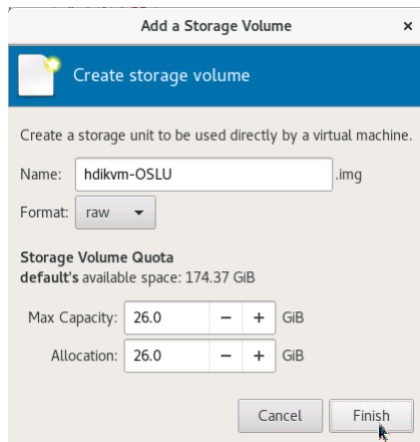
- 7) Check [Enable storage for this virtual machine] and select [Select or create custom storage], and then click [Manage...].



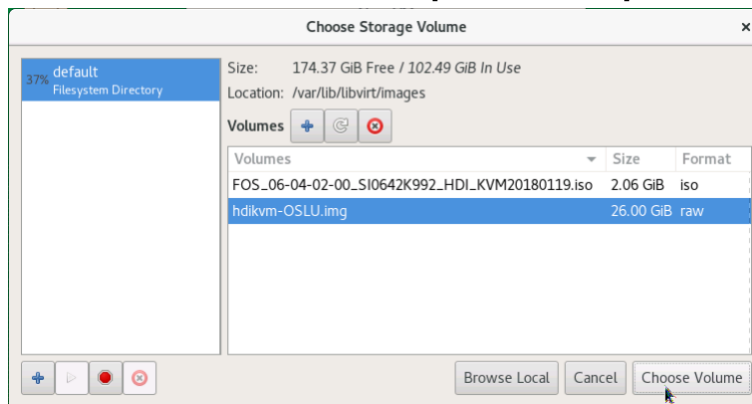
- 8) Click [+] button to create new volume.



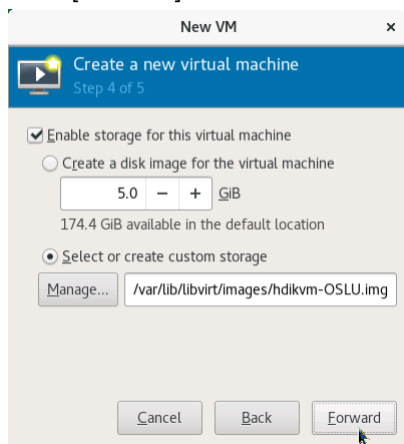
- 9) Input [Name] for OSLU image and select "raw" as [Format]. Input 26 GiB to [Max Capacity] and [Allocation], and then click [Finish].



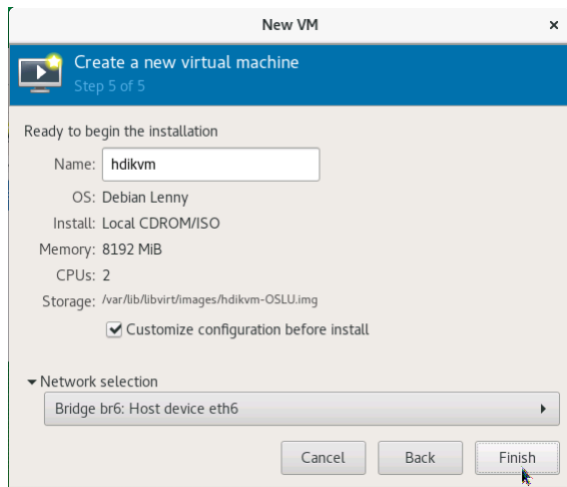
10) Select the created volume and click [Choose Volume].



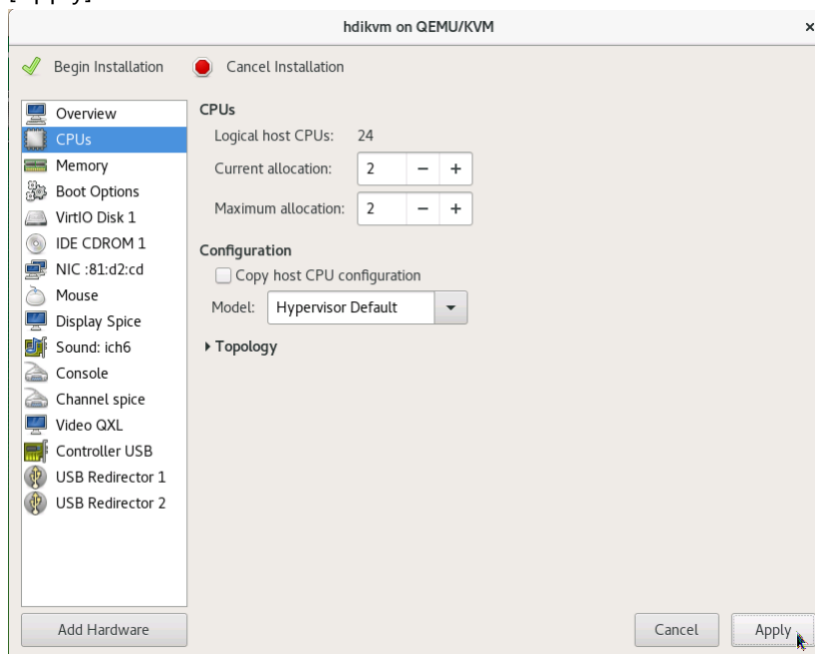
11) Click [Forward].



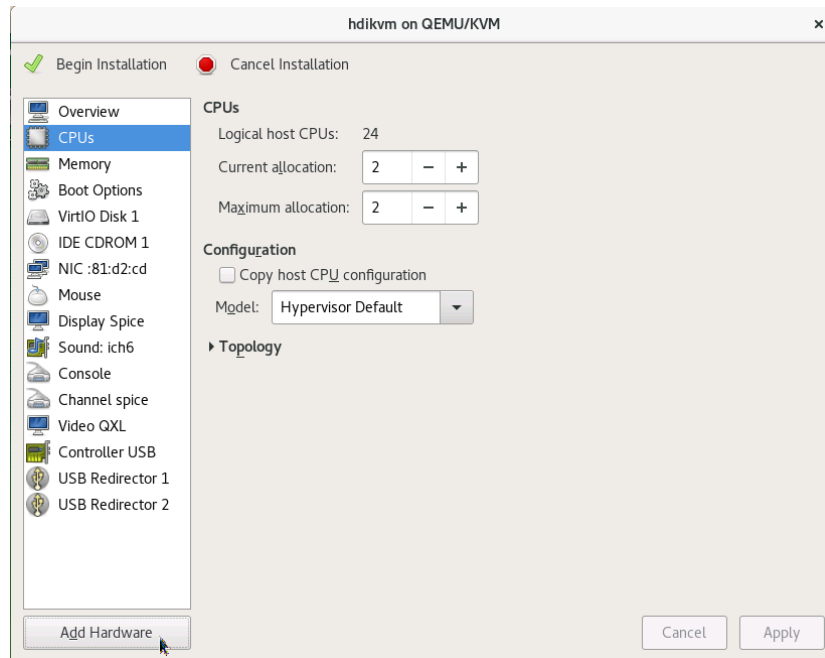
12) Input virtual machine name to [Name], check [Customize configuration before install], select network device which is used for "Management LAN (mng0)" from [Network selection], and then click [Finish].



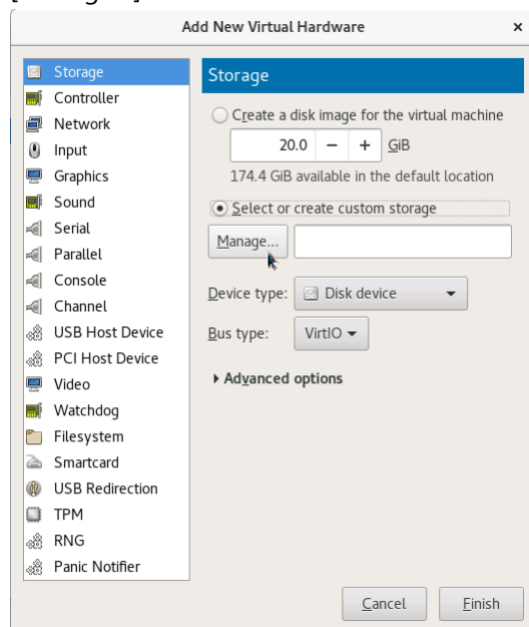
13) Select [CPUs] component, choose "Hypervisor Default" as [Model], and then click the [Apply].



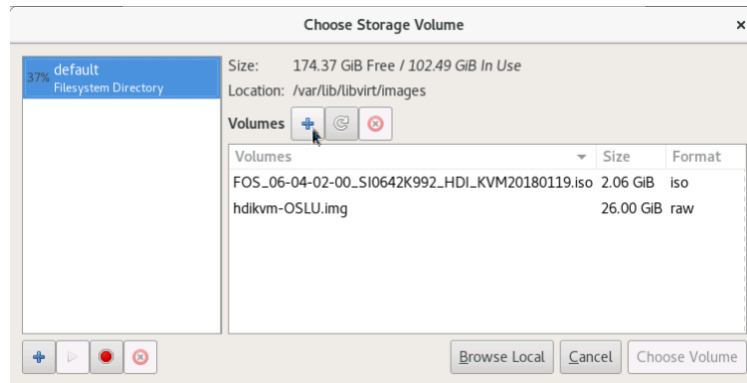
14) Click [Add Hardware] to create Shared LU.



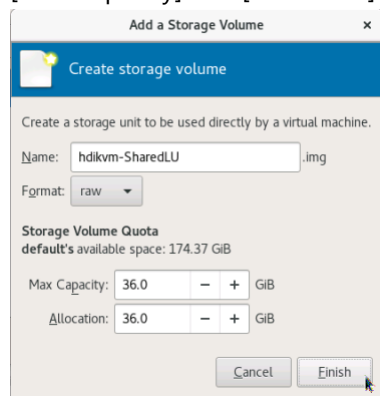
15) Select [Storage] component and check [Select or create custom storage], then click [Manage...].



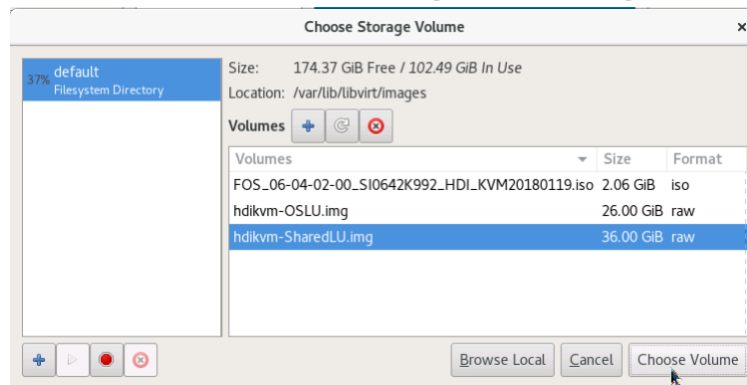
16) Click [+] button to create new volume.



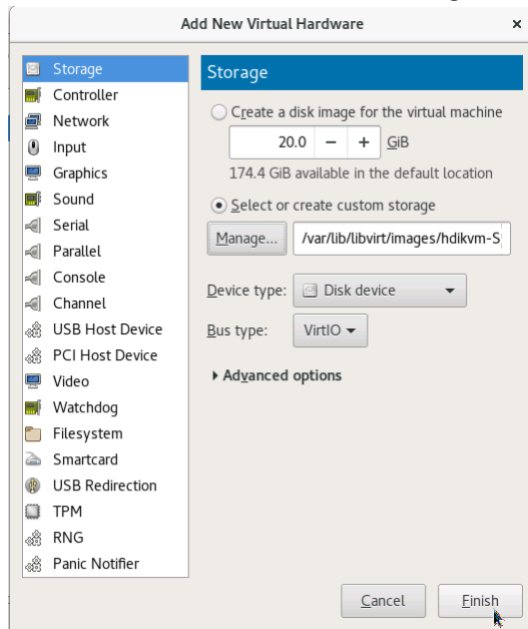
17) Input volume name to [Name] for Shared LU and select "raw" as [Format]. Input 36 GiB to [Max Capacity] and [Allocation]. Then click [Finish].



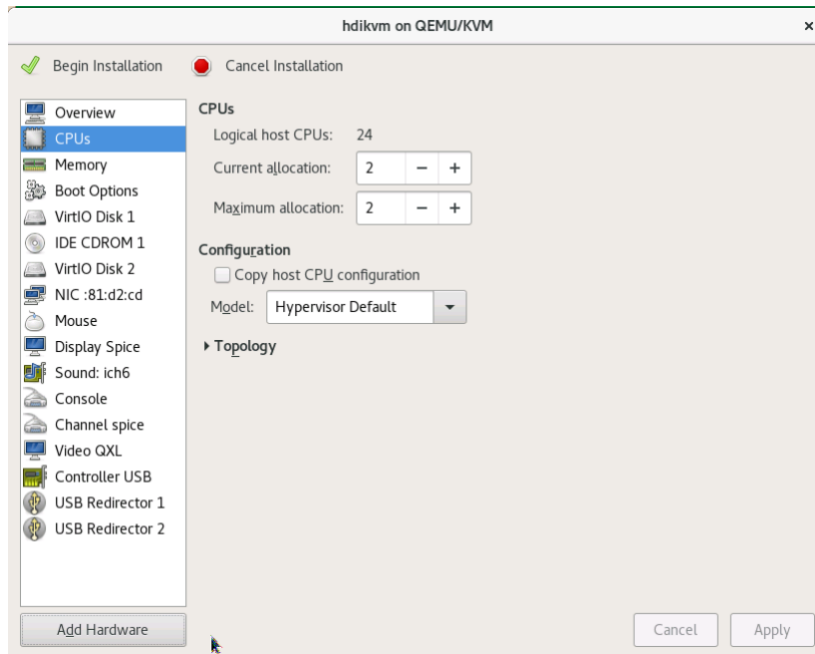
18) Select the created volume and click [Choose Volume].



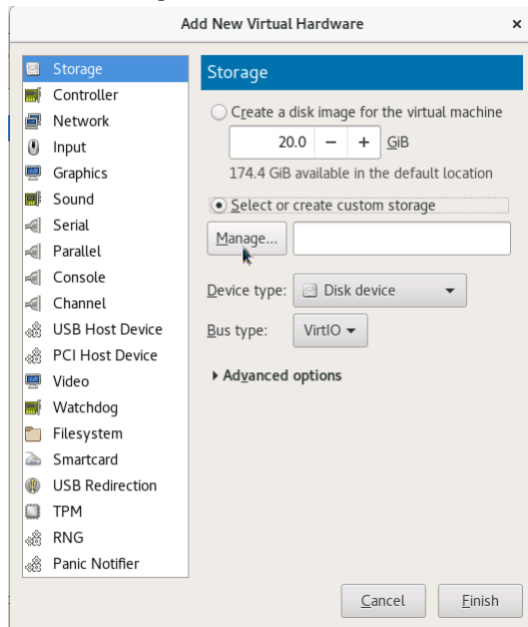
19) Click [Finish] to add the created Storage Volume.



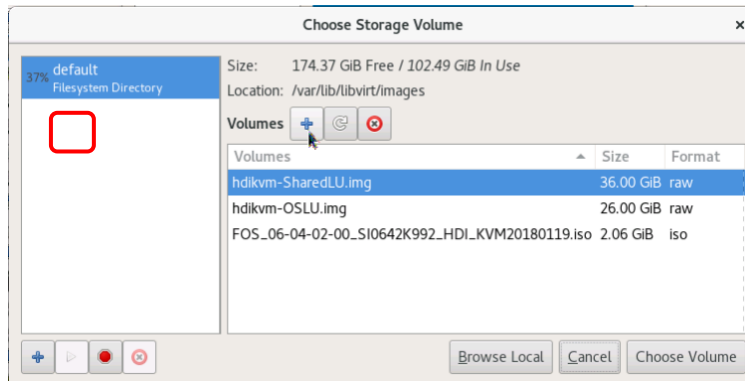
20) Click [Add Hardware] to create User LU.



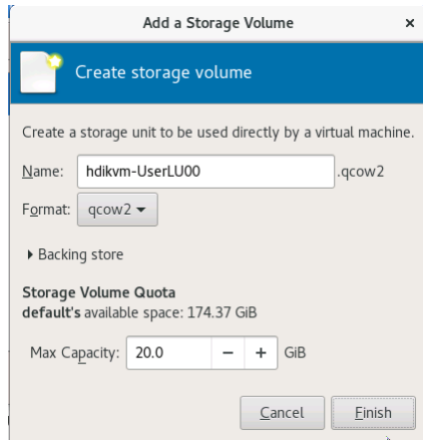
21) Select [Storage] and check [Select or create custom storage], then click [Manage...].



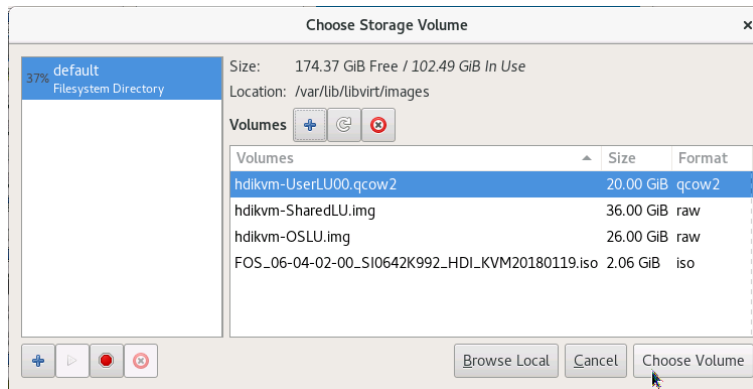
22) Click [+] to create a new volume for User LU.



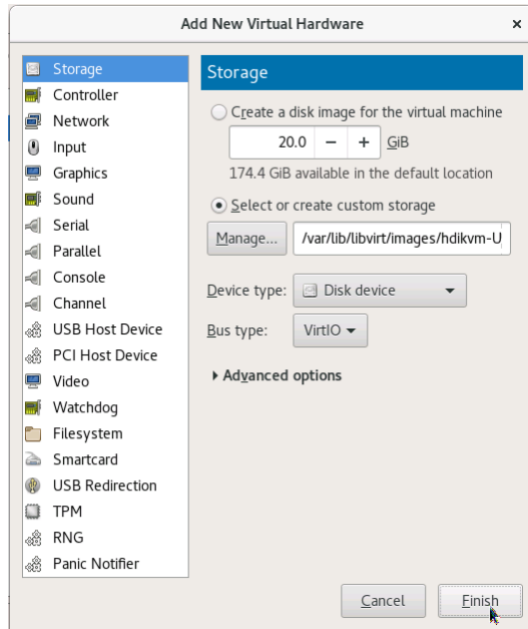
23) Input User LU name to [Name] and select "raw" or "qcow2" as [Format]. Specify the LU size (2 GiB or more) to [Max Capacity]. And then click [Finish].



24) Select the created volume and click [Choose Volume].

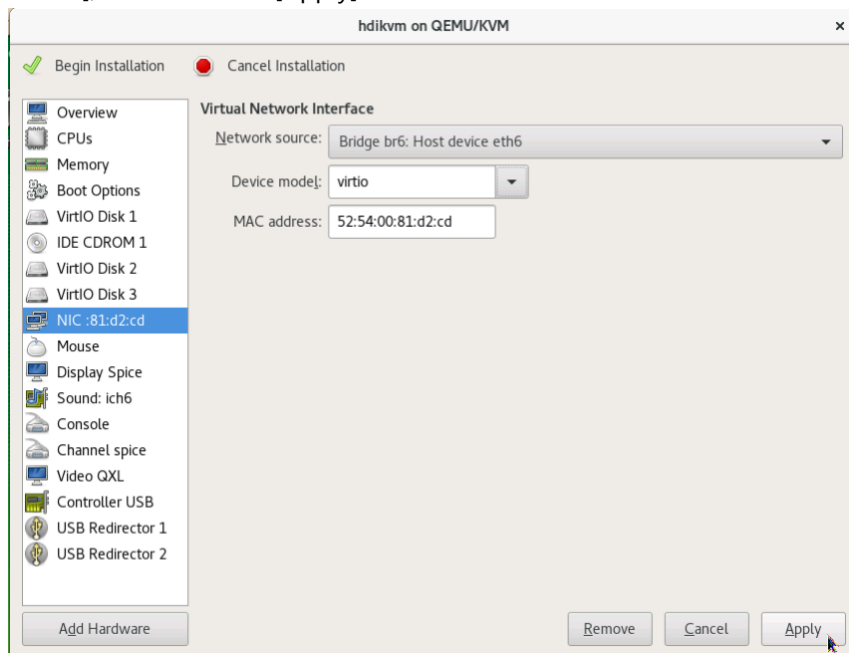


25) Click [Finish] to add the created Storage Volume.

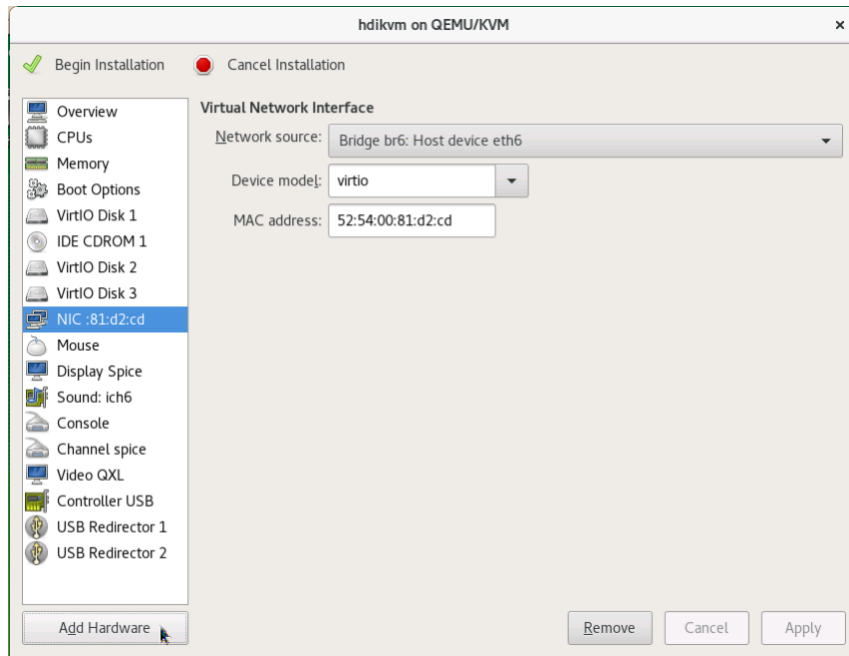


26) If you want to add more User LUs, repeat the same procedure from 20) to 25).

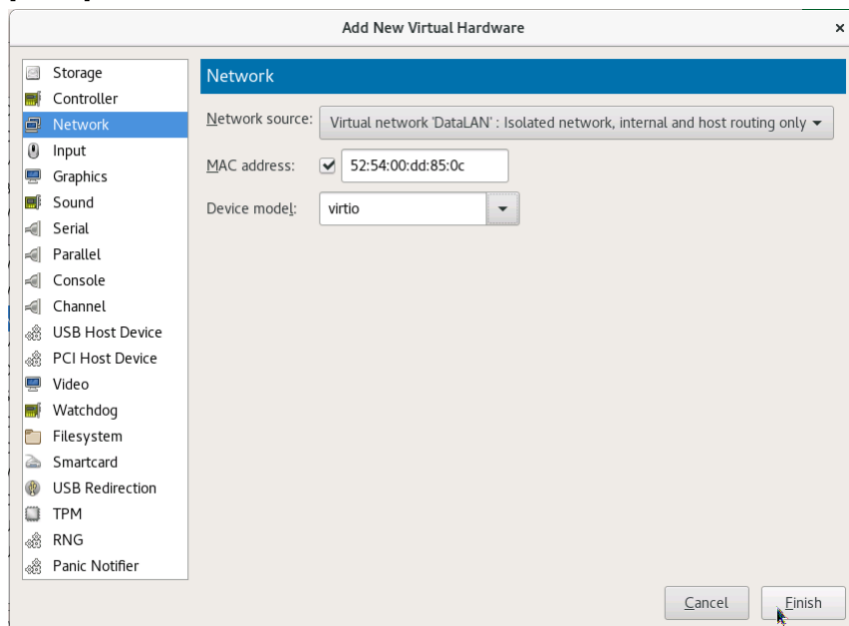
27) Select [NIC: xx:xx:xx] which was created the 12). Select "virtio" or "e1000" as [Device model], and then click [Apply].



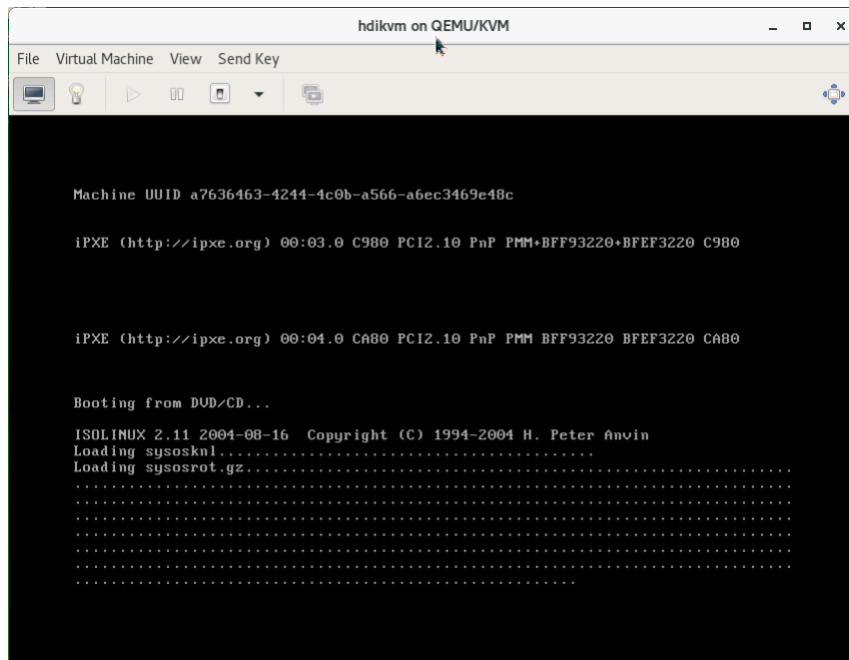
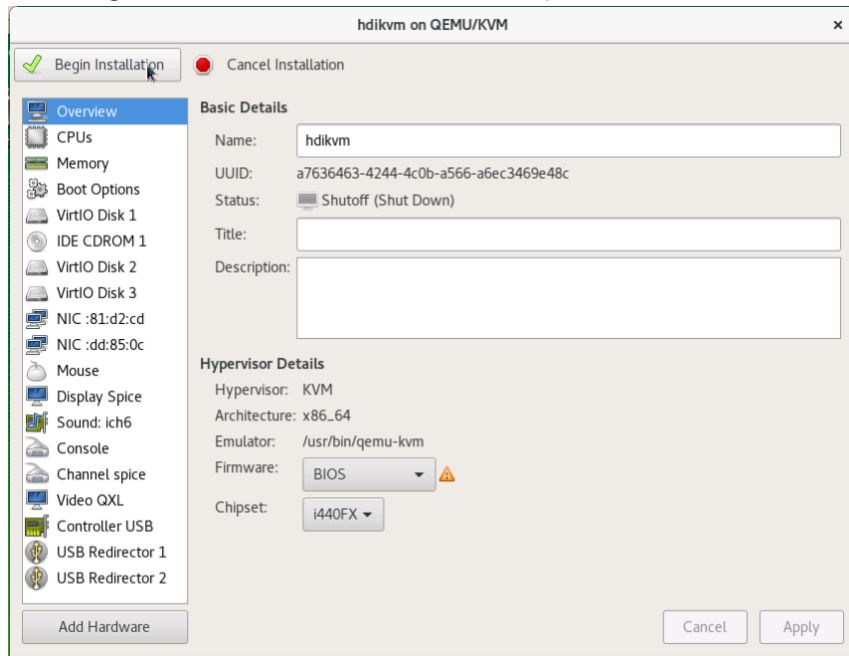
28) Click [Add Hardware] to add Network Interface for Data LAN(eth0).



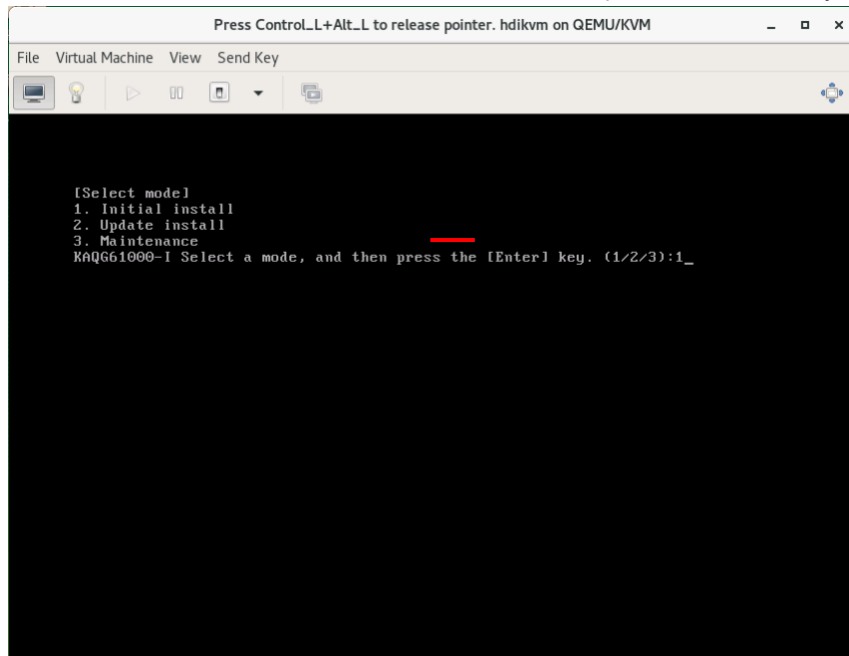
29) Select [Network] component and select [Network source] for data LAN. Select [Device model] that must be the same model as the model which you chose in 27). Then click [Finish].



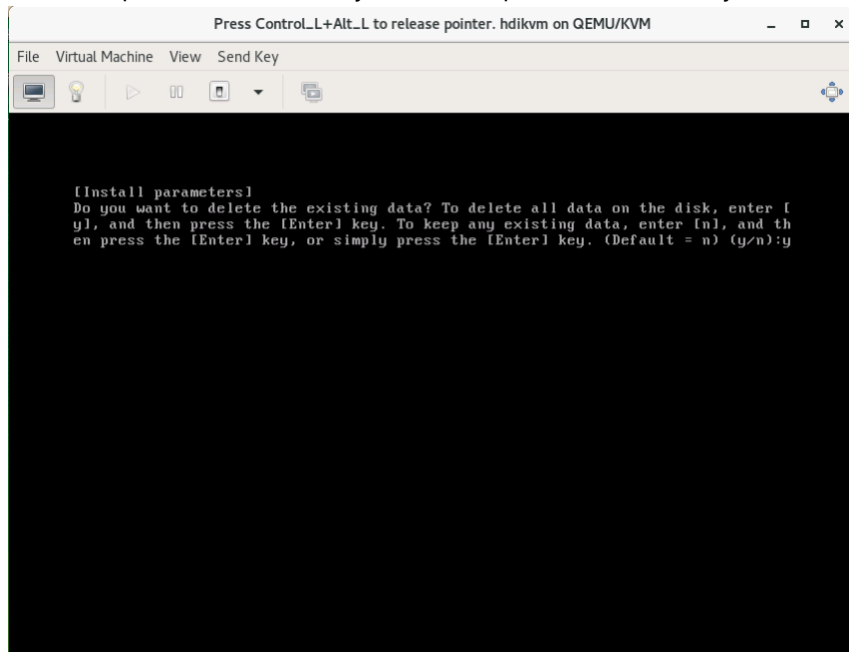
30) Click [Begin Installation] then HDI installation process will be started.



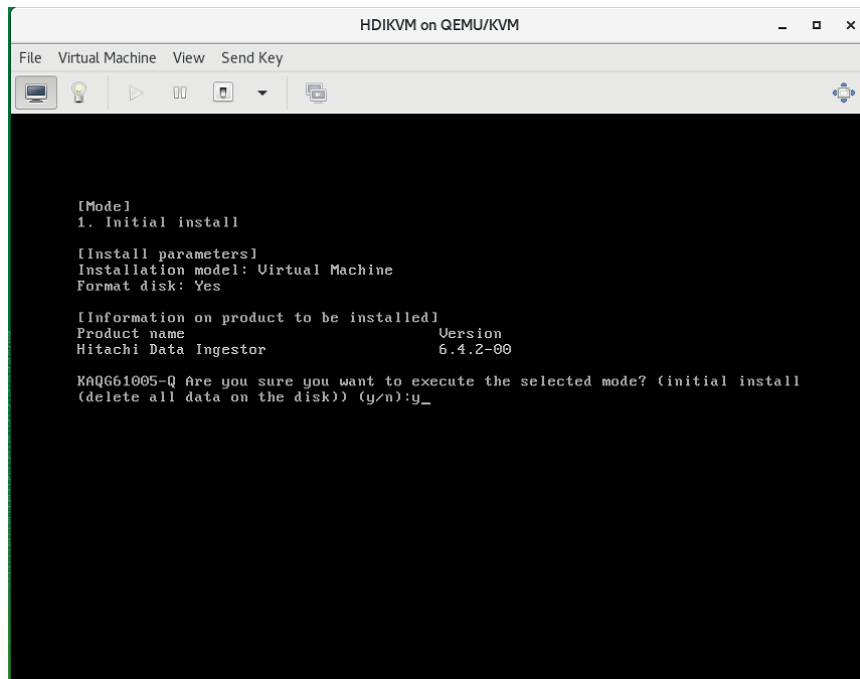
31) In [Select mode], enter "1" (Initial install), and then press the return key.



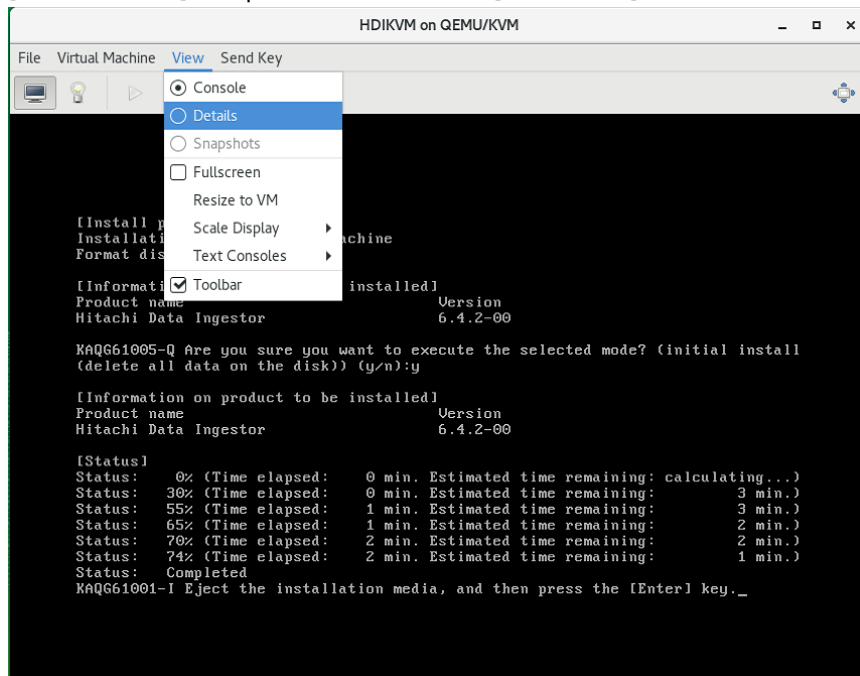
32) In [Install parameters], enter "y", and then press the return key.

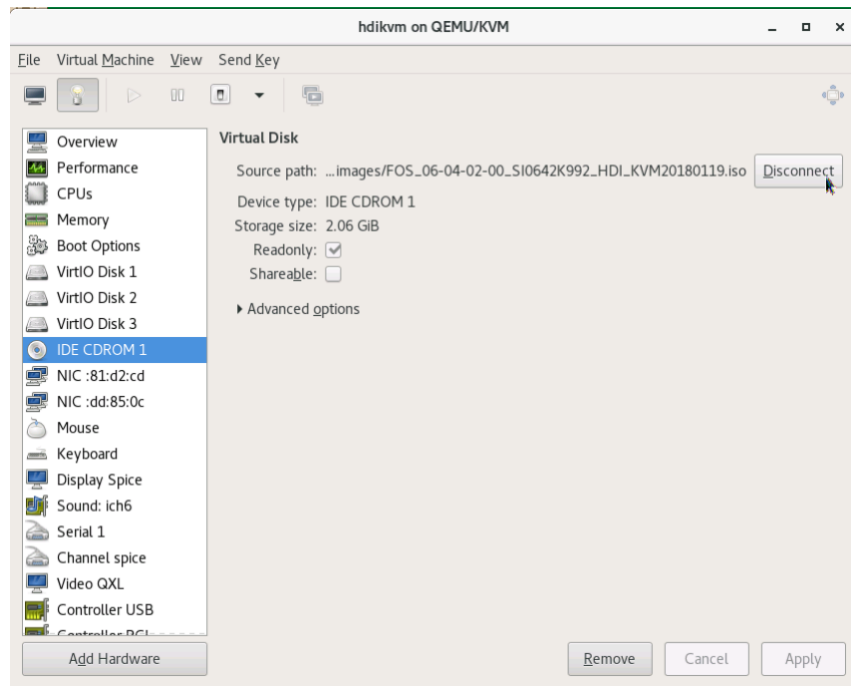


33) In the final confirmation screen, check the [Installation model:] is "Virtual Machine". Enter "y", and then press the return key.

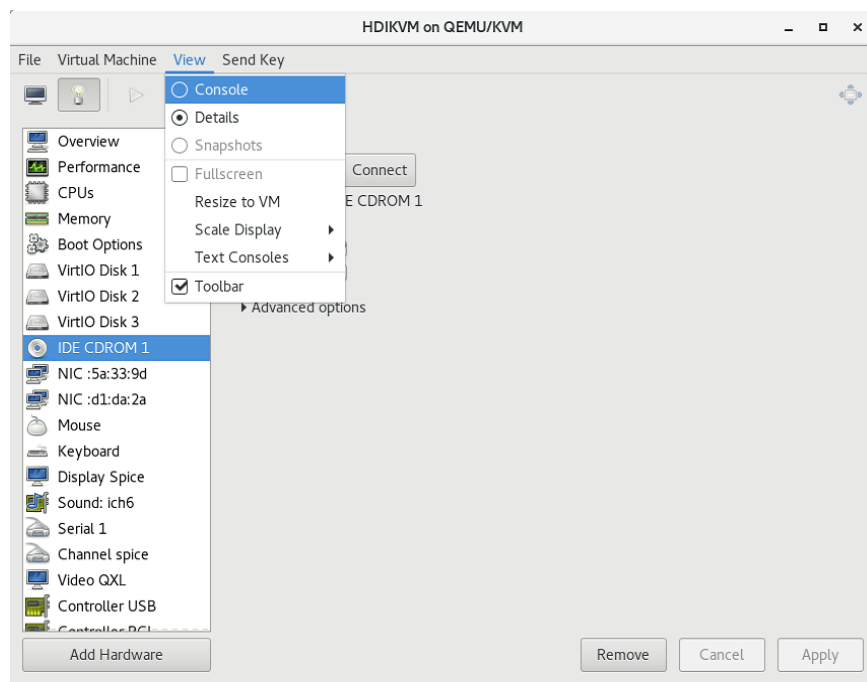


- 34) After installation has been completed, "KAQG61001-I" message is displayed. Press Control_L+Alt_L to release pointer. And Select [View] > [Details] from the menu. Select [IDE CDROM 1] component and click the [Disconnect] to remove the ISO image.





35) Select [View] > [Console] from the menu. Press the [Enter] key on the console. Then the OS will be restarted.




```
Installation model: Virtual Machine
Format disk: Yes

[Information on product to be installed]
Product name      Version
Hitachi Data Ingestor      6.4.2-00

KAQG61005-Q Are you sure you want to execute the selected mode? (initial install
(delete all data on the disk)) (y/n):y

[Information on product to be installed]
Product name      Version
Hitachi Data Ingestor      6.4.2-00

[Status]
Status:  0% (Time elapsed:  0 min. Estimated time remaining: calculating...)
Status: 30% (Time elapsed:  0 min. Estimated time remaining:  3 min.)
Status: 55% (Time elapsed:  1 min. Estimated time remaining:  3 min.)
Status: 65% (Time elapsed:  1 min. Estimated time remaining:  2 min.)
Status: 70% (Time elapsed:  2 min. Estimated time remaining:  2 min.)
Status: 74% (Time elapsed:  2 min. Estimated time remaining:  1 min.)
Status: Completed
KAQG61001-I Eject the installation media, and then press the [Enter] key.
KAQG61002-I The OS will now be restarted.
-
```

36) After the virtual machine restarting, the network setting wizard will be displayed. Select "1" to configure the management LAN, and then press the [Enter] key.

```
Press Control+L+Alt_L to release pointer. hdikvm on QEMU/KVM

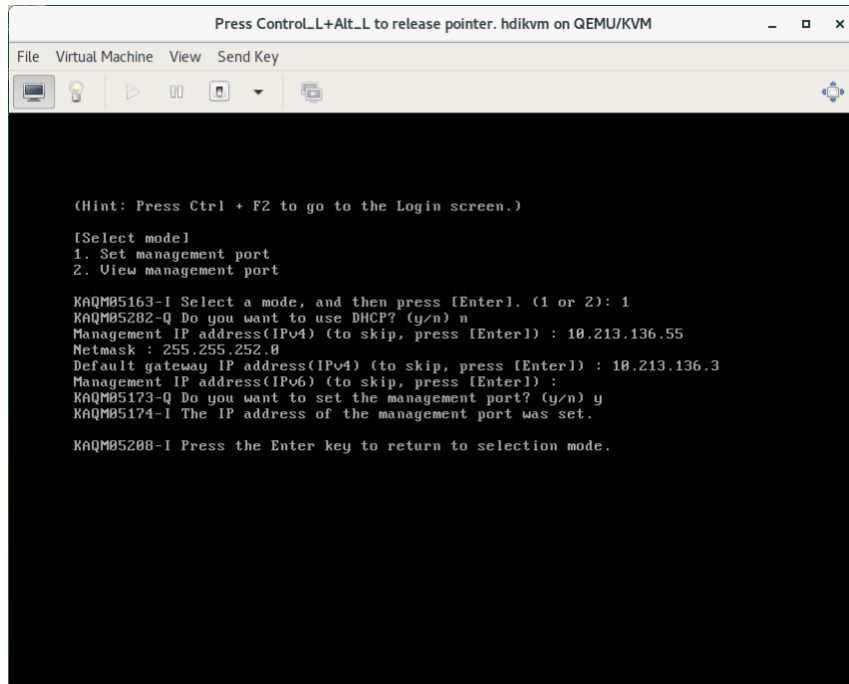
File Virtual Machine View Send Key

(Hint: Press Ctrl + F2 to go to the Login screen.)

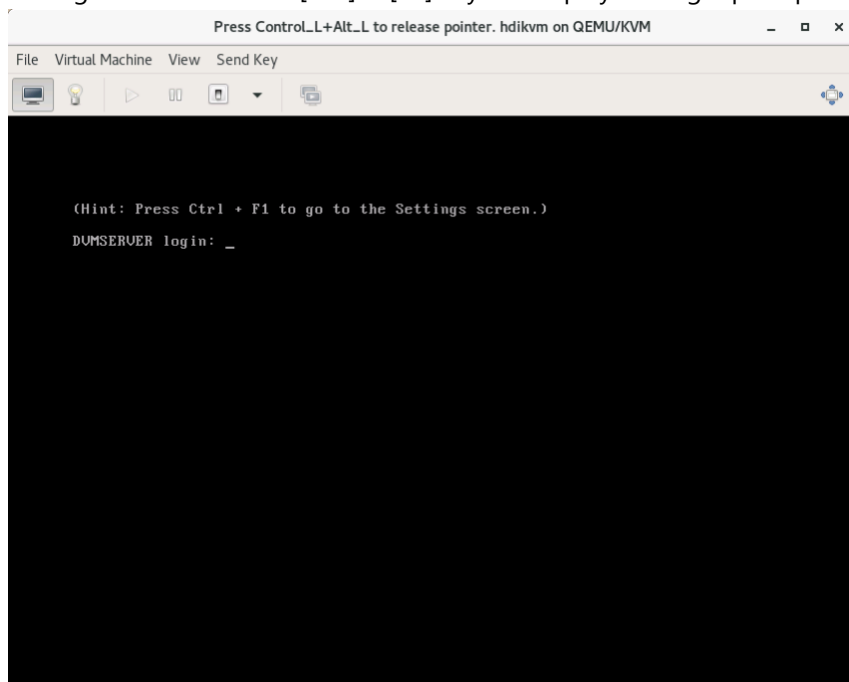
[Select mode]
1. Set management port
2. View management port

KAQM05163-I Select a mode, and then press [Enter]. (1 or 2): 1
```

37) Enter the necessary information according to the network setting wizard. Enter "y" at the end of the wizard, and then press the [Enter] key.



38) After the settings are completed, the window returns to the management LAN network setting wizard. Press the [Ctrl] + [F2] keys to display the login prompt.



Access the HDI from a browser with the IP address which you specified.

Hitachi Data Ingestor

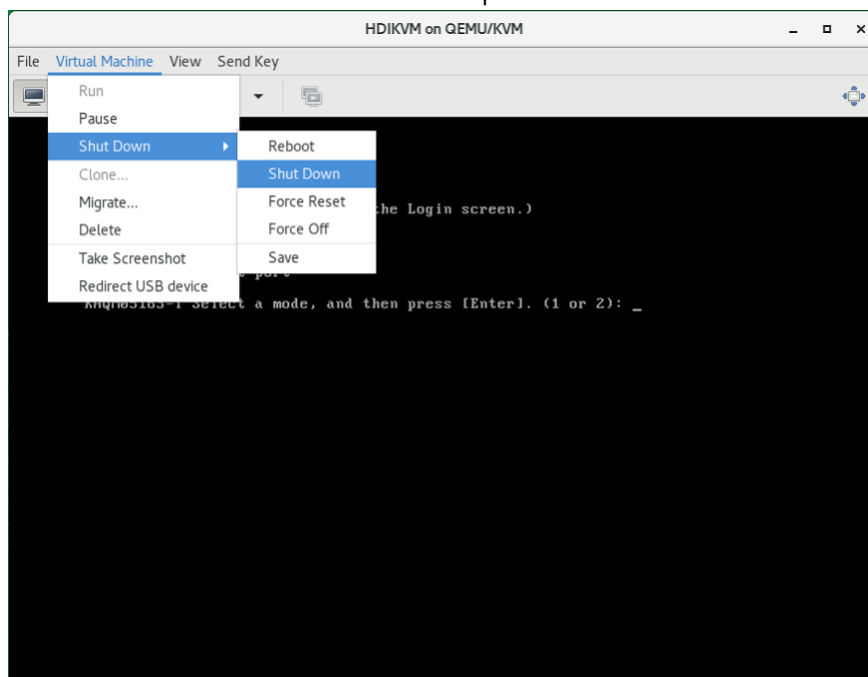
User ID:

Password:

Update installation of HDI

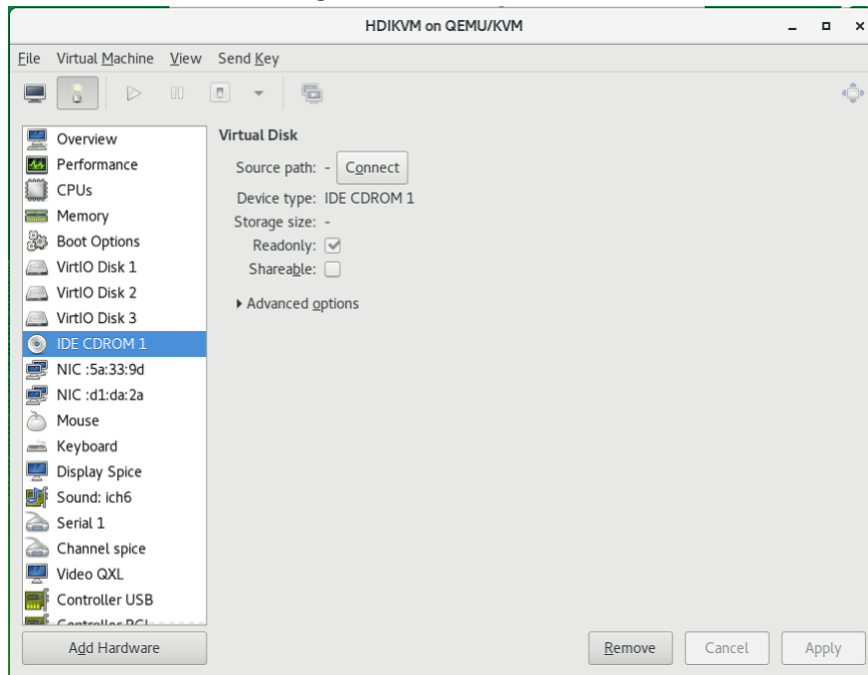
This section describes the procedure for updating a HDI VMA on KVM.

- 1) Shutdown the VMA which needs to be updated.

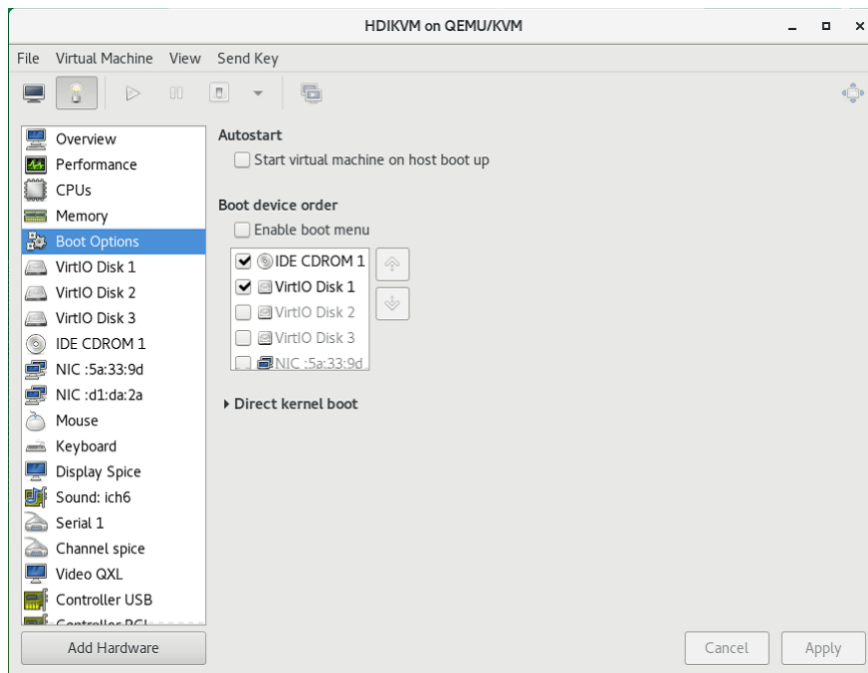


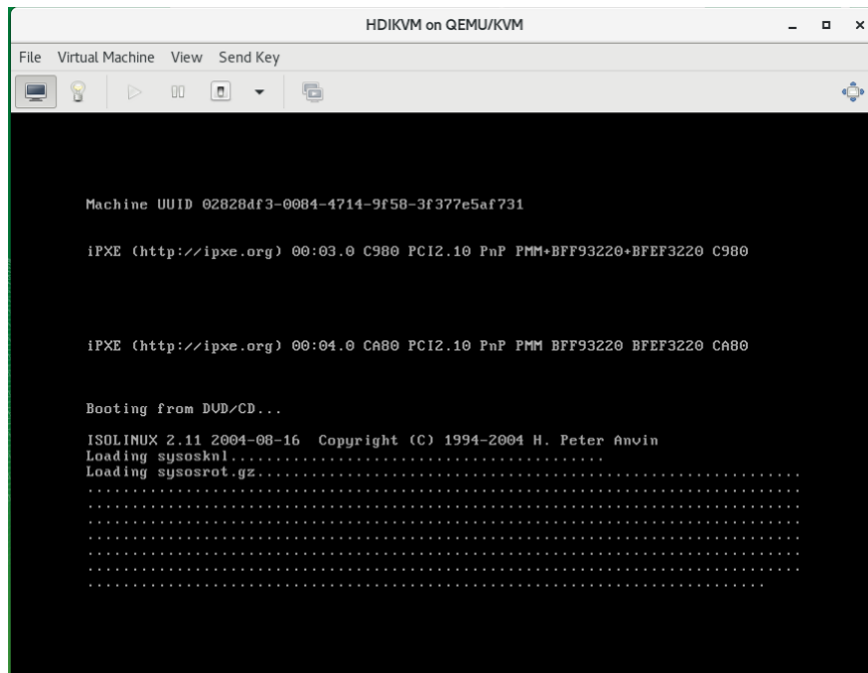
[Note] The VMA will shut down after 2 or 3 minutes.

- 2) Connect new FOS ISO image to CD-ROM on the virtual machine.



- 3) Change "IDE CDROM1" to first boot device at the [Boot Options]. Then start the virtual machine.





- 4) Perform chapter 0 (31) to (35) for update installation. Note that in Chapter 0 (31), you need to enter "2" to select [2. Update install], and then press the [Enter] key.

Note: If the version in the installation confirmation screen displayed in Chapter 0 (33) is different from the version to be installed, press the [Ctrl] + [C] keys to interrupt the installation. When the message "KAQG61006-Q Are you sure you want to cancel the installation? (y/n):" appears, enter "y", and then press the [Enter] key. When the KAQG61001-I message appears, remove the installation medium, and then press the [Enter] key. This allows the node OS to be shut down. Prepare the installation medium with the correct version and perform the operation again.

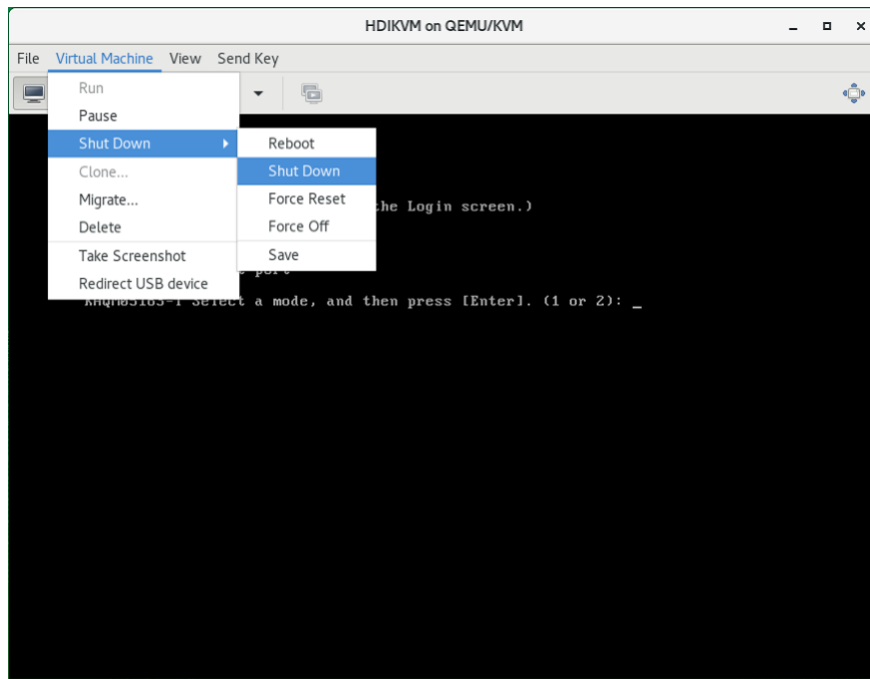
Creating a template of VMA and cloning

Creating a template of VMA

The following procedure is how to create a template of HDI VMA.

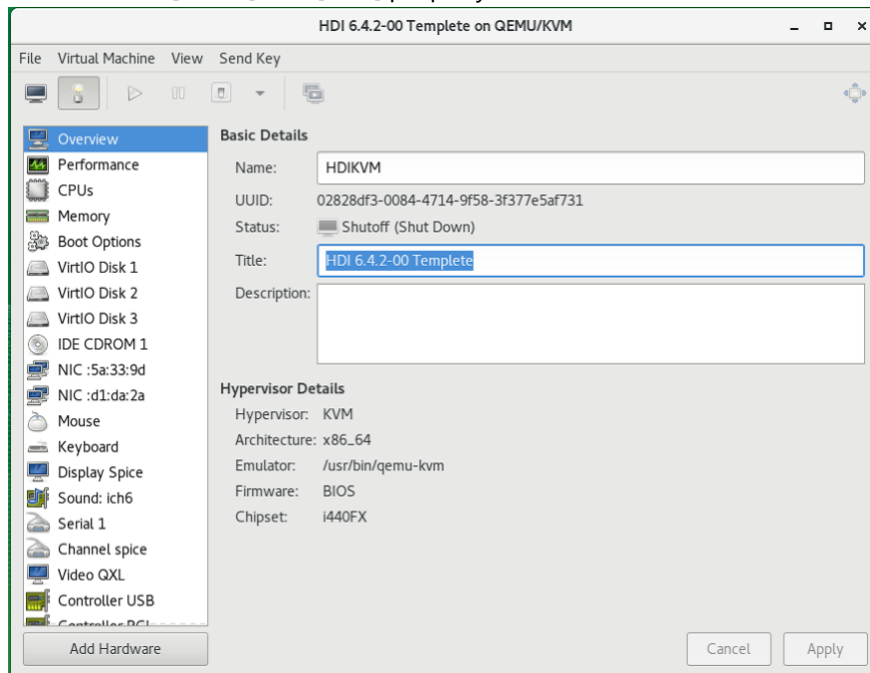
- 1) Perform Chapter 0 from (1) to (35).

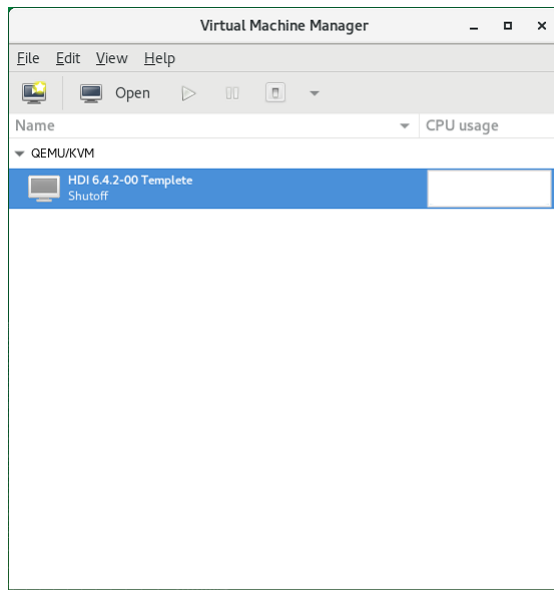
After the virtual machine restarting, the network setting wizard will be displayed. Shut down the VMA before setting the network.



[Note] The VMA will shut down after 2 or 3 minutes.

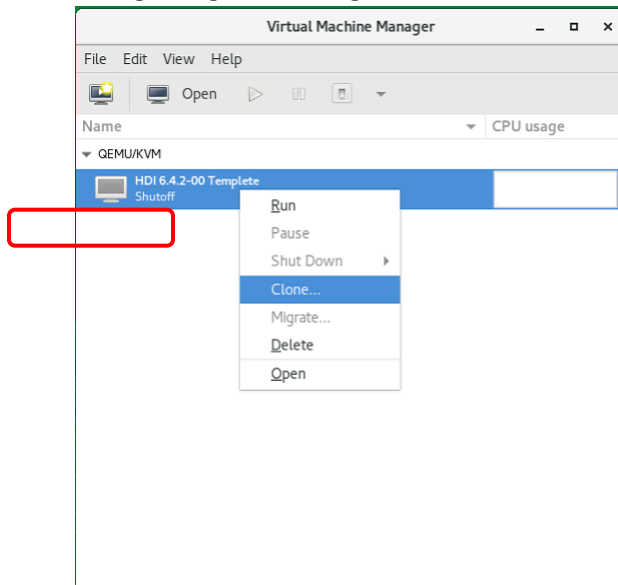
2) Edit the VMA [Name] and [Title] properly

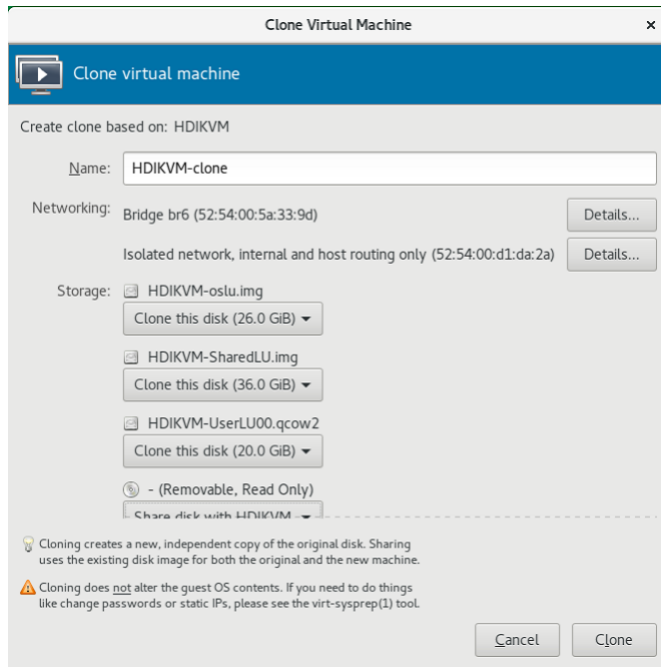




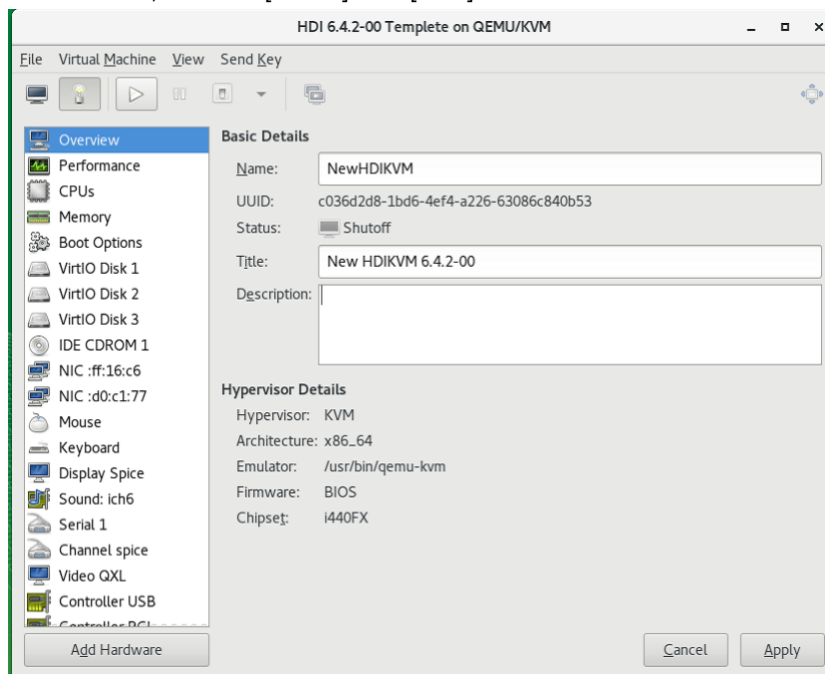
Clone the template VMA

- 1) Select the template VMA and right click. Select [Clone], and then operate the launched dialog along the message.





2) After cloned, edit the [Name] and [Title]. Then run the VMA.



3) Perform Chapter 0 from (36) in order to setup the cloned VMA.

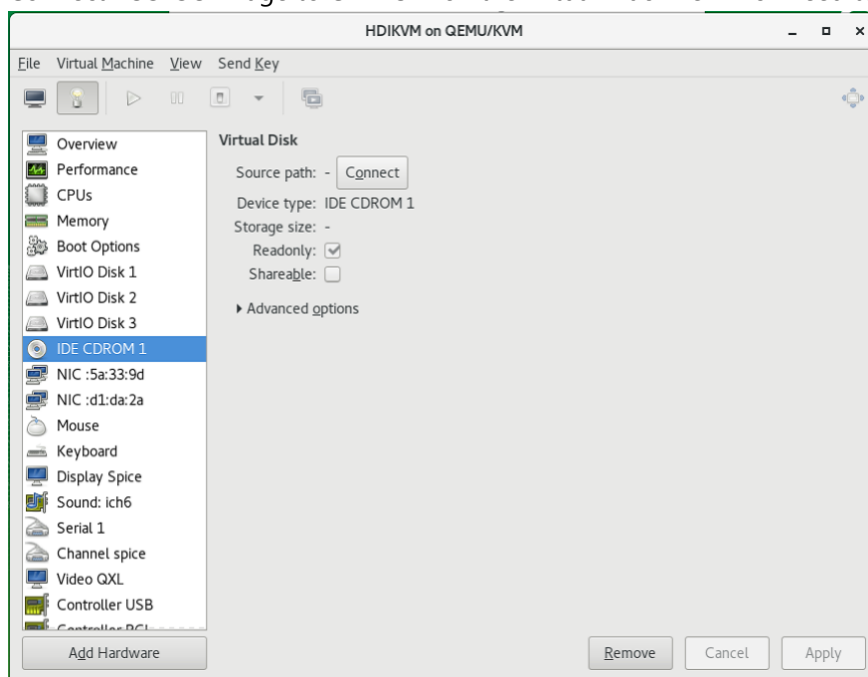
Live migration

Live migration is a function to move a running or stopped virtual machine from a single physical server to another server while retaining its availability to users. For detail information such as requirements and operations, see documents which are provided by the host OS distributor.

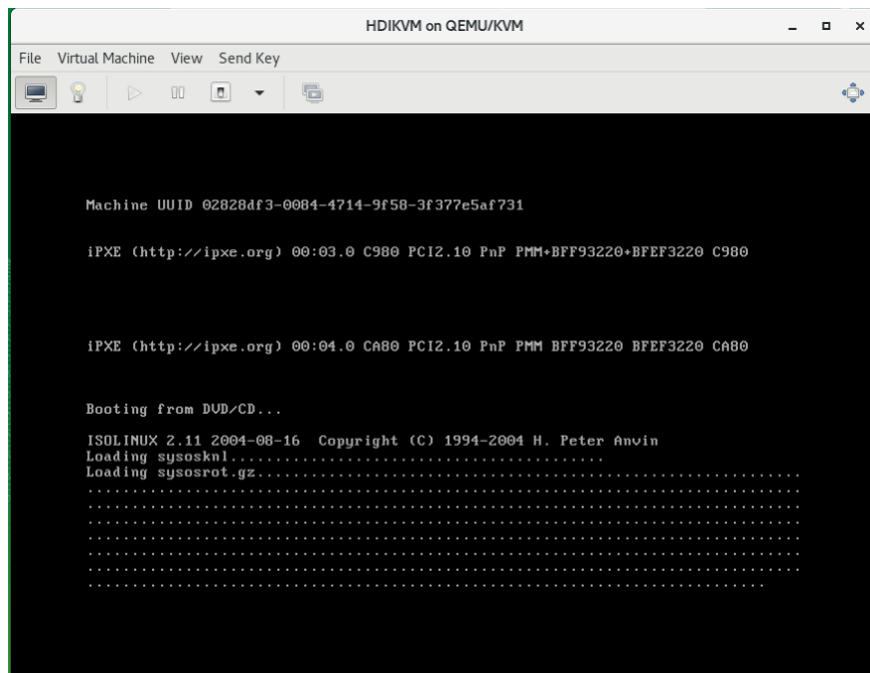
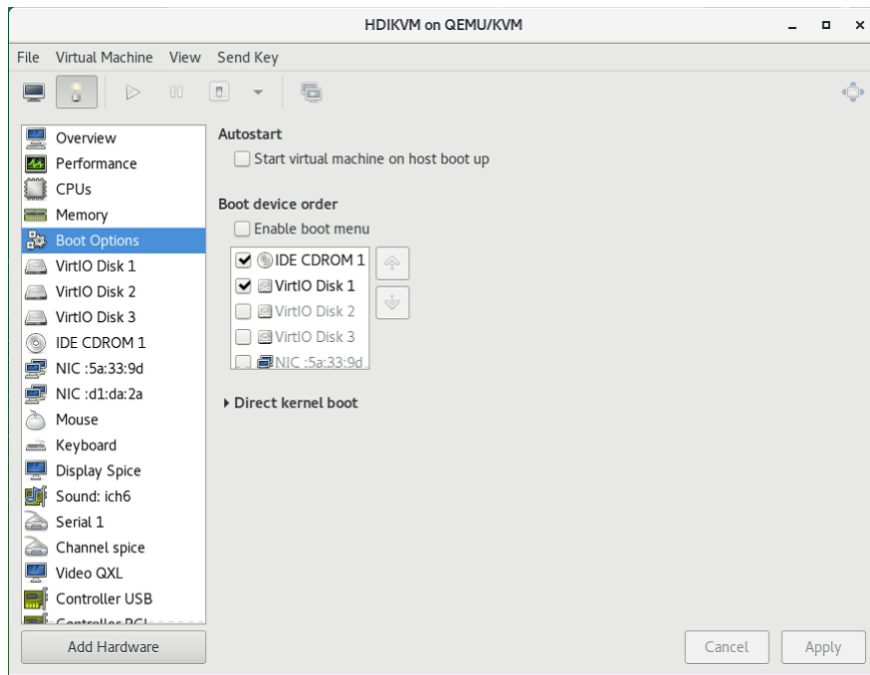
Restoring VMA

This section explains how to restore the HDI VMA from the system configuration that was backed up by the procedure which is described at “Backing up system configuration” in “Single Node Administrator's Guide”.

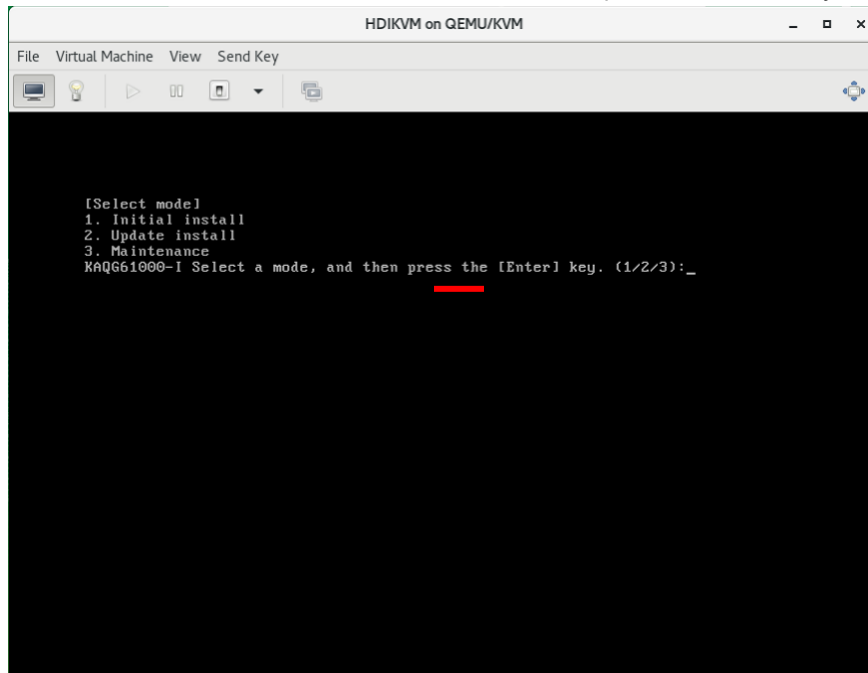
- 1) Connect FOS ISO image to CD-ROM on the virtual machine which need to be recovered.



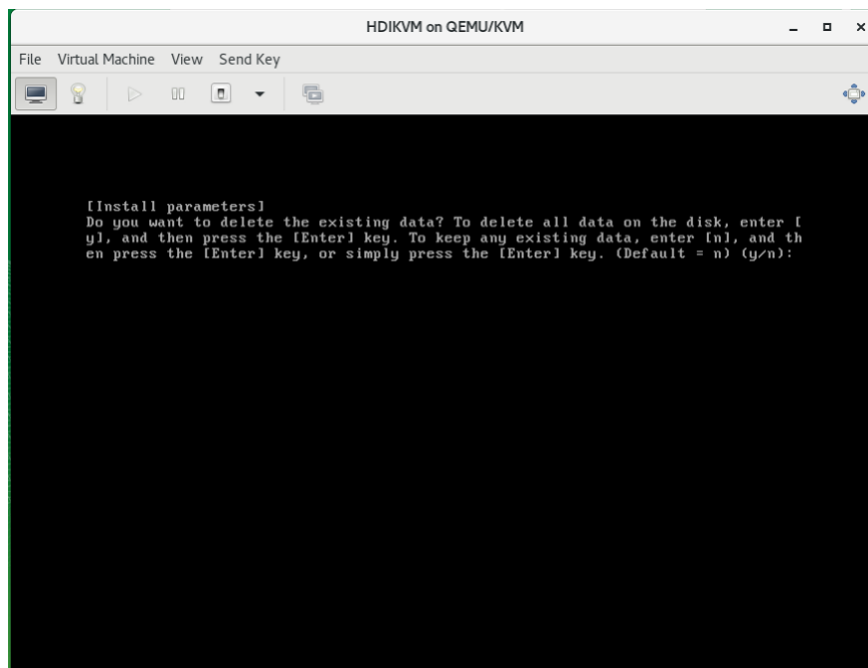
- 2) Change “IDE CDROM1” to first boot device at the [Boot Options]. Then start the virtual machine.

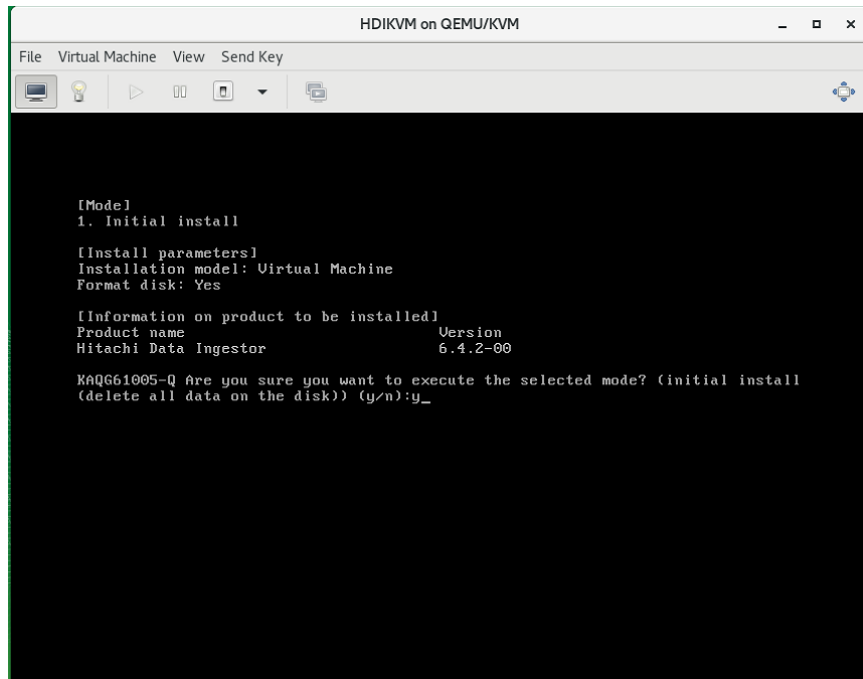


- 3) In [Select mode], enter "1" (Initial install), and then press the return key.

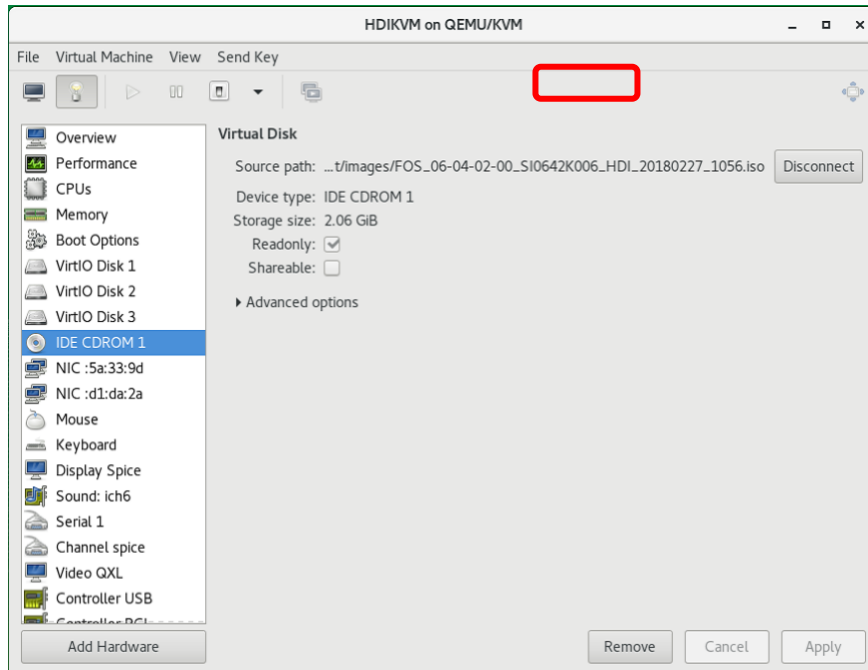


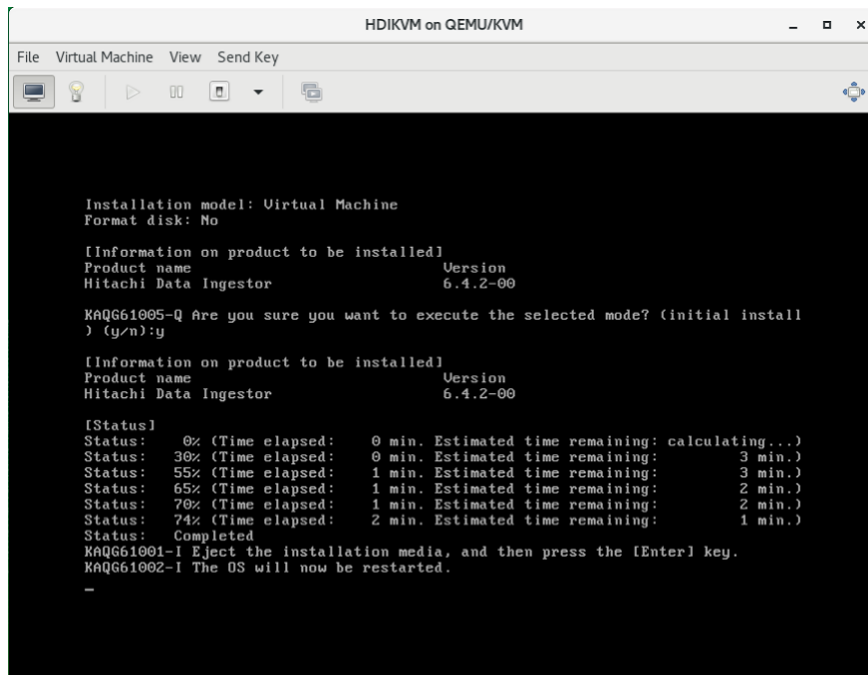
- 4) In [Install parameters], when you restore the system configuration information and user data by a lump for some failures, enter "y". Then press [Enter].
When you want to restore only the system configuration information for the failures, enter "n". Then press [Enter].
If the input parameters are correct, enter "y" at the confirmation message to perform the installation.





- 5) After installation has finished, disconnect the ISO image from CD-ROM. And then reboot the OS.





```
Installation mode: Virtual Machine
Format disk: No

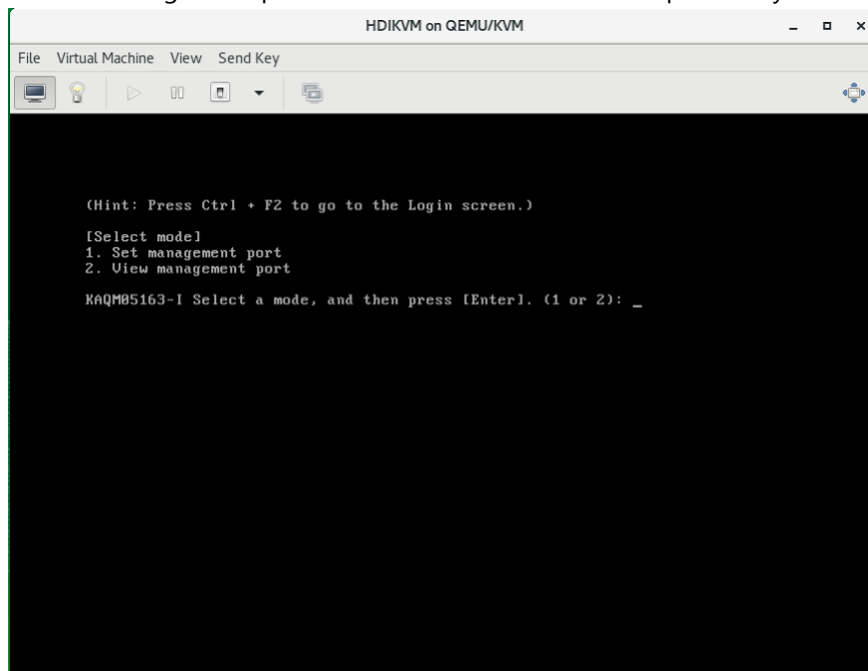
[Information on product to be installed]
Product name      Version
Hitachi Data Ingestor 6.4.2-00

KAQG61005-Q Are you sure you want to execute the selected mode? (initial install) (y/n):y

[Information on product to be installed]
Product name      Version
Hitachi Data Ingestor 6.4.2-00

[Status]
Status: 0% (Time elapsed: 0 min. Estimated time remaining: calculating...)
Status: 30% (Time elapsed: 0 min. Estimated time remaining: 3 min.)
Status: 55% (Time elapsed: 1 min. Estimated time remaining: 3 min.)
Status: 65% (Time elapsed: 1 min. Estimated time remaining: 2 min.)
Status: 70% (Time elapsed: 1 min. Estimated time remaining: 2 min.)
Status: 74% (Time elapsed: 2 min. Estimated time remaining: 1 min.)
Status: Completed
KAQG61001-I Eject the installation media, and then press the [Enter] key.
KAQG61002-I The OS will now be restarted.
-
```

6) Set the management port with the same information as previously



```
(Hint: Press Ctrl + F2 to go to the Login screen.)

[Select mode]
1. Set management port
2. View management port

KAQM05163-I Select a mode, and then press [Enter]. (1 or 2): _
```

See “Restoring system configuration information” subsection in “Single Node Troubleshooting Guide” to restore system.

Appendix

NFS access turning

Multiple NFS daemons run on HDI in parallel. By default, the virtual CPU on which NFS daemons run is in the fixed mode (cpupool_mode=1). You can change the mode to the non-fixed mode (cpupool_mode=0), which does not fix the virtual CPU on which NFS daemons run. This enables the best use of multiple virtual CPUs and improves access performance. The following describes the procedure to change the mode.

- (1) Use the following command to change the operating mode for NFS daemons:

```
$ sudo nfsoptset cpupool_mode=0
$ echo $?
0
$
```

- (2) Make sure that the operating mode for NFS daemons has changed.

```
$ sudo nfsoptlist cpupool_mode
cpupool_mode = 0
$ echo $?
0
$
```

- (3) Restart the NFS service.

```
$ sudo svctl -s nfs --restart
KAQM16131-Q Are you sure you want to restart the specified service?
(y/n) y
$ echo $?
0
$
```

- (4) Make sure that the NFS service has the Running status.

```
$ sudo svstatus -s nfs
Service name : NFS
Status       : Running
Information  : -

$ echo $?
0
```

HDI's NFS Share as a storage pool of KVM

To use another HDI's NFS share as a storage pool of KVM, specify "none" for Anonymous mapping of the NFS share. The default is root only.

```
$ sudo nfslist
List of File Shares:
The number of NFS share(1)
    Shared directory                : /mnt/fs01/nfs_pool
    Public destination host/network  : *
    Permission mode / Synchronous writing : rw_sync
    Anonymous mapping                : none
    Anonymous UID                    : 65534
    Anonymous GID                    : 65534
    Transmission port restriction    : do_not_perform
    Subtree check                    : do_not_perform
    Access check with lock request    : do_not_perform

$
```


Hitachi Vantara



Corporate Headquarters
2845 Lafayette Street
Santa Clara, CA 95050-2639 USA
www.HitachiVantara.com
community.HitachiVantara.com

Regional Contact Information
Americas: +1 866 374 5822 or info@hitachivantara.com
Europe, Middle East and Africa: +44 (0) 1753 618000 or info.emea@hitachivantara.com
Asia Pacific: +852 3189 7900 or info.marketing.apac@hitachivantara.com